

QUICK GUIDE

ASSEMBLING THE PUMPSET

If you need help with your Ardo product, contact customer service at 844-411-ARDO (2736) or support@ardo-usa.com.

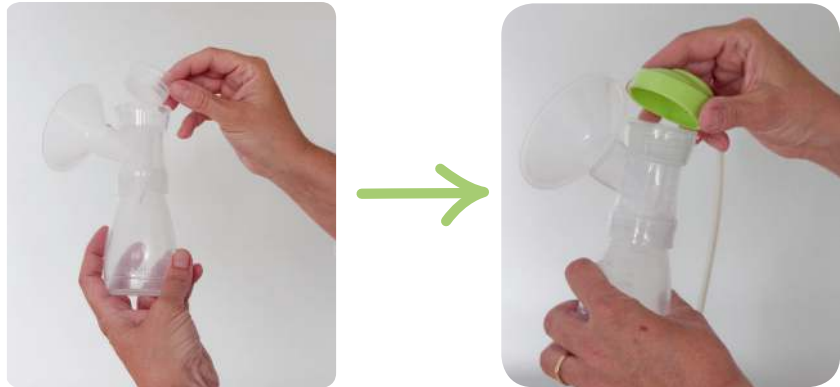
1st Step

Attach the white valve by holding it on its side and insert it into the breast shell. Take the milk bottle and screw it to the breast shell.



2nd Step

Place the flexible membrane pot, smooth side out, in the breast shell and press down firmly. Press the green top (adapter tube cover) on the breast shell.



3rd Step

Line up the the central mark on the green top with the mark on the breast shell, and gently turn the top to the right. The Pumpset is ready to go.



Videos showing the Ardo products can be found on YouTube, Facebook and on www.ardo-usa.com.

 Find us on Facebook Ardo USA  Ardo Breast Pumps



This quick guide does not replace the instructions for use, which should be read before use. Ardo medical AG, Gewerbstrasse 19, 6314 Unterägeri, Switzerland.